

All Animals Vet Clinic

"The Happy Vets 4 Happy Pets" WINTER 2014

Unit T, Viking House,
Daneholes Roundabout,
Stanford Road, Grays,
Essex, RM16 2XE,
Lizzie Rigby BVSc MBA MRCVS

NEWS

Welcome....

Welcome to our Winter newsletter.

Practice Facilities:

- Consultations by appointment
- Nurse Clinics
- In house laboratory
- Xray machine & Endoscope
- Full Anaesthetic & Surgical facilities
- Weekday in-patient facilities with Vet on site overnight
- Stockists of Royal Canin & James Wellbeloved diets
- 24 hour emergency service provided at The Wylie Vet Centre in Upminster which is staffed 24/7 with Vets & Nurses

Practice opening hours:

Monday & Friday:
8.30 am – 7.00pm

Tuesday & Thursday:
8.30am – 6.00pm

Wednesday: 8.30 am – 9.00pm

Consulting Times:

Monday – Friday:
9.00am – 10.30am

Monday & Friday:
4.00pm – 6.00pm

Tuesday & Thursday:
4.00pm – 5.00pm

Wednesday:
5.00pm – 8.00pm

Loyalty Schemes

Spend £100 on non prescription products and receive a £5 voucher

Royal Canin food loyalty scheme.
Buy 8 bags and receive 1 free.

Synoquin Joint Tablets –
Buy 6 and get 1 free

Christmas 2014



We wish all our clients and their four legged friends a very Merry Christmas and a Happy New Year. This year we will be closing for one week, Monday 22nd December through to Friday 26th December. We will open as normal on Monday 29th December and Tuesday 30th December and then close again from Wednesday 31st December. We will be back to normal from Monday 5th January 2015. During the times we are closed, we have arranged with The Wylie Veterinary Centre in Upminster to see any of our clients in the event of an emergency. For any food/prescriptions required before Christmas please order by 4.00pm on Thursday 18th December. Orders placed after this date will not be available for collection until Tuesday 30th December.



Christmas Hours

Friday 19th December: *Open as normal*

Saturday 20th December through to Sunday 28th December: *Closed*

Monday 29th and Tuesday 30th December: *Open as normal*

Wednesday 31st December through to Sunday 4th January: *Closed*

Monday 5th January onwards: *Open as normal*

Happy Christmas!

Out Of Hours Emergency Cover

To give your pet the quickest and best emergency treatment out of hours we have teamed up with Night Vets Ltd and Wylie Veterinary Centre in Upminster.

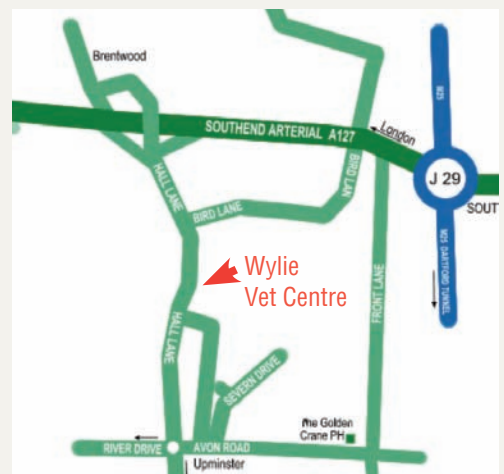
Night Vets will take all emergencies from clients registered at All Animals Vet Clinic, 7 nights a week, 7pm until 9am. Wylies will treat our client's pets in an emergency on Tuesdays and Thursdays 6pm - 7pm, and Saturdays, Sundays and Bank Holidays 9am - 7pm.

To call direct (please state you are registered at All Animals Vet Clinic in Grays):

Night Vets – 07817 895 177
(7pm until 9am)

Wylies – 01708 251 200 Both Night Vets and Wylie Vet Centre operate from the same address: 196 Hall Lane, Upminster, Essex, RM14 1TD

Please note an out of hours consult fee will be charged. Any discount that you may receive at All Animals will not be applicable out of hours.



Like us on Facebook and you will be entered into a monthly draw for a £10 Lakeside voucher!

Tel: 01375 399033 • Web: www.allanimalsvetclinic.co.uk
Fax: 01375 385129 • Email: allanimalsvetclinic@hotmail.co.uk

The many benefits of regularly grooming your pet!



In addition to the regular health checks your pet receives from us, it's a great idea to perform some form of routine grooming yourself. Get your pet used to you examining their eyes, ears, teeth, feet and giving them a general check-over. This way you can better detect any problems at an earlier stage.

So what may you find when grooming your pet?

Parasites need no introduction to most pet owners! The two major ones to keep a watchful look out for are fleas and ticks.

• **Fleas:** Pets are often very effective at grooming fleas (thus removing the evidence!), so as well as looking for these tiny pests, keep an eye out for any signs of brown flea "dirt" (flea faeces) which also indicates their presence. Fleas are a major cause of skin problems in pets and can also bite humans!

• **Ticks:** The big issue here is the diseases they can transfer to your pet when they latch on and feed on their blood. This is mainly in the form of Lyme disease (which can affect pets and humans alike), but for pets travelling to mainland Europe, many will be exposed to a range of other diseases carried by ticks. Regular grooming and removal of ticks with a suitable tick hook, plus treatment with a product to kill or repel ticks, forms the basis for prevention of tick borne diseases in our pets.

Grass seeds of the meadow grasses are easily trapped in the coats of pets, especially dogs. They often migrate and become lodged in a variety of places including the ears, eyes and between the toes. Regular grooming – especially after walks, is helpful in preventing problems with grass seeds and ticks.

Lumps and swellings are another issue to keep a watchful eye out for. If you find a skin lump on your pet, there are several possible underlying causes – these include abscesses, hernias and tumours. Tumours can be either *benign* – which tend to be slow growing and remain in one place, or *malignant* – which invade the surrounding tissues and may also spread to other parts of the body.

If you find any lumps or swellings it's a good idea to get them checked by us as soon as possible. Timing is everything and delay in appropriate treatment can be the difference between a small treatable mass and one that is far more difficult to treat.

So – when grooming your pet, if you find anything of concern, bring your pet in for a check-over and don't forget to maintain your guard against fleas and ticks and grass seeds!

What to look out for:

Fleas: Specks of flea "dirt" (faeces) in the coat indicates the presence of fleas.



If you collect these brown specks and drop them onto some wetted paper, they will dissolve yielding a characteristic reddish blotch confirming the presence of fleas.

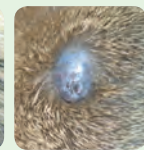
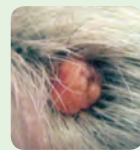
Ticks: Parting the coat reveals a tick in situ with buried mouth parts.



A grass seed has become lodged between the toes in a dog causing a painful interdigital cyst.



Skin lumps: may vary considerably in appearance. Some are fairly obvious, whilst others are harder to detect. Some lumps move with the skin while others feel 'stuck' to underlying tissues.



Skin lump on a dog

Skin lump on a cat



It's cold out there!

With winter nights drawing in, it's important to take good care of all our pets so here are a few seasonal tips:

Outdoor pets such as rabbits and guinea pigs will need extra bedding and food, and hutches should be moved into sheltered areas and covered for frost protection. Keep a regular eye on their water container to make sure it doesn't freeze up.



Turning to dogs, whilst many dogs love the cold and snow, slim fine coated breeds such as whippets find it hard to conserve heat and will benefit from dog coats in cold weather.

In the home, ensure pets have warm comfortable sleeping areas but remember that **fleas** also love their creature comforts as well, so don't drop your guard during the winter!



The festive season brings with it a huge range of hazards for our pets! Items such as **ribbon and tinsel**

are very attractive to mischievous pets and, if swallowed, may lead to a serious intestinal blockage.

Whilst on the subject of edible items, don't forget that **chocolate** can be very toxic to dogs – in general the higher the cocoa content the more toxic the chocolate. Additionally **grapes, raisins or sultanas** are all toxic to dogs, making Christmas cakes, puddings and mince pies a serious hazard.



Many pets also love chewing **house plants** however some of these are very toxic! **Lilies** are a particular hazard to cats, with all parts of the plant being toxic.

STOP PRESS: electronic cigarettes pose a very serious risk to dogs that chew them, due to high concentrations of nicotine within.

If you have any questions on keeping your pet healthy – please just ask!

Does your pet drink like a fish?



Increased drinking is a very common early sign of a range of diseases, so if you are filling up the water bowl more frequently, it's time to stop and work out which pet is drinking too much and make an appointment!

Excessive thirst can indicate diseases ranging from liver or kidney disease, to diabetes and other hormonal conditions (including Cushing's disease in dogs and hyperthyroidism in cats). Infections can also cause increased drinking, particularly pyometra (a womb infection in an unsprayed bitch which also causes signs of illness and lethargy).

So if you think your pet is drinking more than normal, please bring them in for a check-up. As well as giving your pet a thorough clinical examination, urine and blood tests are usually very helpful in making a diagnosis. Radiography and ultrasound of the abdomen may also be of help, allowing an assessment of the size, shape and internal structure of the organs.

The good news is that we do have treatments for many of the conditions mentioned above which will hopefully ease the symptoms and prevent or slow the progression of the disease. Please call us if you are at all worried about your pet!

The many benefits of regularly grooming your pet!



In addition to the regular health checks your pet receives from us, it's a great idea to perform some form of routine grooming yourself. Get your pet used to you examining their eyes, ears, teeth, feet and giving them a general check-over. This way you can better detect any problems at an earlier stage.

So what may you find when grooming your pet?

Parasites need no introduction to most pet owners! The two major ones to keep a watchful look out for are fleas and ticks.

• **Fleas:** Pets are often very effective at grooming fleas (thus removing the evidence!), so as well as looking for these tiny pests, keep an eye out for any signs of brown flea "dirt" (flea faeces) which also indicates their presence. Fleas are a major cause of skin problems in pets and can also bite humans!

• **Ticks:** The big issue here is the diseases they can transfer to your pet when they latch on and feed on their blood. This is mainly in the form of Lyme disease (which can affect pets and humans alike), but for pets travelling to mainland Europe, many will be exposed to a range of other diseases carried by ticks. Regular grooming and removal of ticks with a suitable tick hook, plus treatment with a product to kill or repel ticks, forms the basis for prevention of tick borne diseases in our pets.

Grass seeds of the meadow grasses are easily trapped in the coats of pets, especially dogs. They often migrate and become lodged in a variety of places including the ears, eyes and between the toes. Regular grooming – especially after walks, is helpful in preventing problems with grass seeds and ticks.

Lumps and swellings are another issue to keep a watchful eye out for. If you find a skin lump on your pet, there are several possible underlying causes – these include abscesses, hernias and tumours. Tumours can be either *benign* – which tend to be slow growing and remain in one place, or *malignant* – which invade the surrounding tissues and may also spread to other parts of the body.

If you find any lumps or swellings it's a good idea to get them checked by us as soon as possible. Timing is everything and delay in appropriate treatment can be the difference between a small treatable mass and one that is far more difficult to treat.

So – when grooming your pet, if you find anything of concern, bring your pet in for a check-over and don't forget to maintain your guard against fleas and ticks and grass seeds!

What to look out for:

Fleas: Specks of flea "dirt" (faeces) in the coat indicates the presence of fleas.



If you collect these brown specks and drop them onto some wetted paper, they will dissolve yielding a characteristic reddish blotch confirming the presence of fleas.

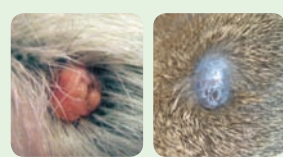
Ticks: Parting the coat reveals a tick in situ with buried mouth parts.



A grass seed has become lodged between the toes in a dog causing a painful interdigital cyst.



Skin lumps: may vary considerably in appearance. Some are fairly obvious, whilst others are harder to detect. Some lumps move with the skin while others feel 'stuck' to underlying tissues.



Skin lump on a dog Skin lump on a cat



It's cold out there!

With winter nights drawing in, it's important to take good care of all our pets so here are a few seasonal tips:

Outdoor pets such as rabbits and guinea pigs will need extra bedding and food, and hutches should be moved into sheltered areas and covered for frost protection. Keep a regular eye on their water container to make sure it doesn't freeze up.



Turning to dogs, whilst many dogs love the cold and snow, slim fine coated breeds such as whippets find it hard to conserve heat and will benefit from dog coats in cold weather.

In the home, ensure pets have warm comfortable sleeping areas but remember that **fleas** also love their creature comforts as well, so don't drop your guard during the winter!



The festive season brings with it a huge range of hazards for our pets! Items such as **ribbon and tinsel**

are very attractive to mischievous pets and, if swallowed, may lead to a serious intestinal blockage.

Whilst on the subject of edible items, don't forget that **chocolate** can be very toxic to dogs – in general the higher the cocoa content the more toxic the chocolate. Additionally **grapes, raisins or sultanas** are all toxic to dogs, making Christmas cakes, puddings and mince pies a serious hazard.



Many pets also love chewing **house plants** however some of these are very toxic! **Lilies** are a particular hazard to cats, with all parts of the plant being toxic.

STOP PRESS: electronic cigarettes pose a very serious risk to dogs that chew them, due to high concentrations of nicotine within.

If you have any questions on keeping your pet healthy – please just ask!

Does your pet drink like a fish?



Increased drinking is a very common early sign of a range of diseases, so if you are filling up the water bowl more frequently, it's time to stop and work out which pet is drinking too much and make an appointment!

Excessive thirst can indicate diseases ranging from liver or kidney disease, to diabetes and other hormonal conditions (including Cushing's disease in dogs and hyperthyroidism in cats). Infections can also cause increased drinking, particularly pyometra (a womb infection in an unsprayed bitch which also causes signs of illness and lethargy).

So if you think your pet is drinking more than normal, please bring them in for a check-up. As well as giving your pet a thorough clinical examination, urine and blood tests are usually very helpful in making a diagnosis. Radiography and ultrasound of the abdomen may also be of help, allowing an assessment of the size, shape and internal structure of the organs.

The good news is that we do have treatments for many of the conditions mentioned above which will hopefully ease the symptoms and prevent or slow the progression of the disease. Please call us if you are at all worried about your pet!